



LMK 382H

**Stainless Steel Probe
with HART[®]-communication**

Ceramic-Sensor

**accuracy according to IEC 60770:
standard: 0.2 % FSO
option: 0.1% FSO**

Nominal pressure

from 0 ... 60 cmH₂O
up to 0 ... 100 mH₂O

Output signals

2-wire: 4 ... 20 mA
others on request

Special characteristics

- ▶ diameter 39.5 mm
- ▶ **HART[®] communication (setting of offset, span and damping)**
- ▶ permissible temperatures up to 85 °C
- ▶ high overpressure resistance
- ▶ chemical resistance
- ▶ high long-term stability

Optional versions

- ▶ IS-version zone 0
- ▶ mounting with stainless steel pipe
- ▶ flange version
- ▶ diaphragm 99.9 % Al₂O₃
- ▶ accessories e.g. assembling and probe flange, mounting clamp

The stainless steel probe LMK 382H has been designed for continuous level measurement in waste water, waste and higher viscosity mediums.

Basic element is a robust and high overpressure capable capacitive ceramic sensor e.g. for low levels.

Preferred areas of use are

Sewage



waste water treatment
water recycling

Fuel / Oil



level monitoring in open tanks
with low filling heights
fuel storage
tank farms
biogas plants

Aggressive media



level measurement for most acids
and lyes

LMK 382H Probe



Pressure ranges ¹								
Nominal pressure	[bar]	0.06	0.16	0.4	1	2	5	10
Level	[mH ₂ O]	0.6	1.6	4	10	20	50	100
Overpressure	[bar]	2	4	6	8	15	25	35
¹ On customer request we adjust the devices by software on the required pressure ranges, within the turn-down possibility (starting at 0.02 bar).								
Output signal / Supply								
Standard	2-wire: 4 ... 20 mA / V _S = 12 ... 36 V _{DC} with HART [®] communication						V _{S rated} = 24 V _{DC}	
Option IS- protection	2-wire: 4 ... 20 mA / V _S = 14 ... 28 V _{DC} with HART [®] communication						V _{S rated} = 24 V _{DC}	
Performance								
Accuracy ²	standard	TD ≤ 1:5	≤ ± 0.2 % FSO				TD _{max} = 1:10	
	≥ 160 mbar	TD > 1:5	≤ ± [0.2 + 0.03 x TD] % FSO					
	standard < 160 mbar		≤ ± [0.2 + 0.1 x TD] % FSO				TD _{max} = 1:3	
	option for P _N ≥ 0.6 bar	TD ≤ 1:5	≤ ± 0.1 % FSO				TD _{max} = 1:10	
		TD > 1:5	≤ ± [0.1 + 0.02 x TD] % FSO					
Permissible load	R _{max} = [(V _S - V _{S min}) / 0.02] Ω load at HART [®] -communication: R _{min} = 250 Ω							
Long term stability	≤ ± (0.1 x turn-down) % FSO / year at reference conditions							
Influence effects	supply: 0.05 % FSO / 10 V permissible load: 0.05 % FSO / kΩ							
Turn-on time	850 msec							
Mean response time	140 msec without consideration of electronic damping					mean measuring rate 7/sec		
Max. response time	380 msec							
Adjustability	configuration of following parameters possible (interface / software necessary ³): - electronic damping: 0 ... 100 sec - offset: 0 ... 80 % FSO - turn down of span: max. 1:10							
² accuracy according to IEC 60770 – limit point adjustment (non-linearity, hysteresis, repeatability)								
³ software, interface, and cable have to be ordered separately (software appropriate for Windows [®] 95, 98, 2000, NT Version 4.0 or higher, and XP)								
Thermal effects (Offset and Span)								
Tolerance band	≤ ± (0.2 x turn-down) % FSO							
TC, average	± (0.02 x turn-down) % FSO / 10 K							
in compensated range	-20 ... 80 °C							
Permissible temperatures	medium:		-25 ... 85 °C					
	electronics / environment:		-25 ... 85 °C					
	storage:		-25 ... 85 °C					
Electrical protection ⁴								
Short-circuit protection	permanent							
Reverse polarity protection	no damage, but also no function							
Electromagnetic compatibility	emission and immunity according to EN 61326							
⁴ additional external overvoltage protection unit in terminal box KL 1 or KL 2 with atmospheric pressure reference available on request								
Mechanical stability								
Vibration	4 g (according to: DIN EN 60068-2-6)							
Electrical connection								
Cable outlet with sheat material ⁵	PVC	(-5 ... 70 °C)	grey					
	PUR	(-25 ... 70 °C)	black					
	FEP	(-25 ... 70 °C)	black					
	TPE	(-25 ... 85 °C)	blue					
⁵ shielded cable with integrated air tube for atmospheric pressure reference								
Materials								
Housing	stainless steel 1.4404							
Seals	FKM FFKM EPDM others on request							
Diaphragm	standard: ceramics Al ₂ O ₃ 96 % option: ceramics Al ₂ O ₃ 99.9 %							
Protection cap	POM							
Miscellaneous								
Option cable protection	stainless steel pipe for probe in stainless steel: available as compact product (standard: stainless steel pipe with a total length up to 2 m possible; other lengths on request)							
Ingress protection	IP 68							
Current consumption	max. 21 mA							
Weight	approx. 400 g (without cable)							
CE-conformity	EMC Directive: 2004/108/EC							

LMK 382H

Stainless Steel Probe

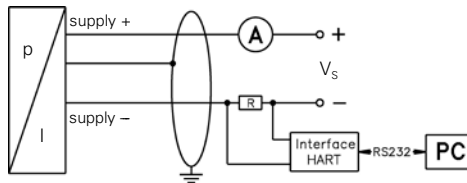
Technical Data

IS-protection	
Approval DX15-LMK 382H	IBExU 10 ATEX 1186 X zone 0 ⁶ : II 1G Ex ia IIB T4
Safety technical maximum values	$U_i = 28 \text{ V}$, $I_i = 93 \text{ mA}$, $P_i = 660 \text{ mW}$, $C_i = 105 \text{ nF}$, $L_i = 5 \text{ } \mu\text{H}$
Permissible media temperature	in zone 0: $-10 \dots 60 \text{ }^\circ\text{C}$ with p_{atm} 0.8 bar up to 1.1 bar zone 1 or higher: $-25 \dots 70 \text{ }^\circ\text{C}$
Connecting cables (by factory)	cable capacitance: signal line/shield also signal line/signal line: 160 pF/m cable inductance: signal line/shield also signal line/signal line: $1 \text{ } \mu\text{H/m}$

⁶ for optional stainless steel pipe following designation is valid: "II 1 G Ex ia IIB T4" (zone 0)

Wiring diagram

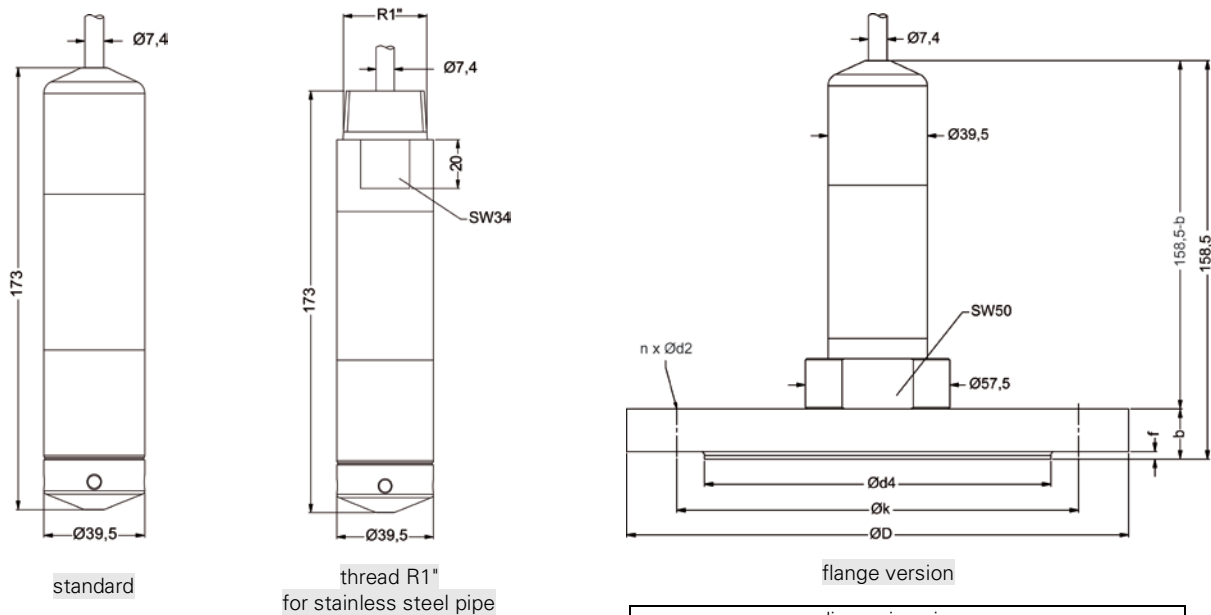
2-wire-system (current) HART[®]



Pin configuration

Electrical connection	cable colours (DIN 47100)
Supply +	wh (white)
Supply -	bn (brown)
Shield	gn/ye (green / yellow)

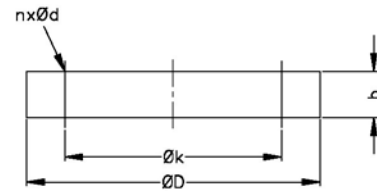
Dimensions (in mm)



dimensions in mm				
dimen- sions	DN25 / PN40	DN40/ PN40	DN50 / PN40	DN80 / PN16
D	115	150	165	200
K	85	110	125	160
d4	68	88	102	138
b	18	18	20	20
f	2	3	3	3
n	4	4	4	8
d2	14	18	18	18

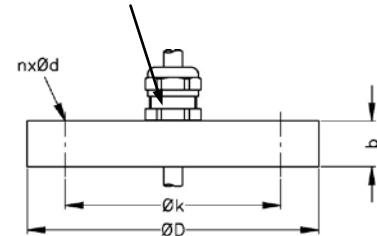
HART[®] is a registered trade mark of HART Communication Foundation;
Windows[®] is a registered trade mark of Microsoft Corporation

Transmitter flange for flange version		
Technical data		
Suitable for	LMK 382, LMK 382H, LMK 458, LMK 458H	
Flange material	stainless steel 1.4404 (316L)	
Hole pattern	according to DIN 2507	
Version	Size (in mm)	Weight
DN25 / PN40	D = 115, k = 85, b = 18, n = 4, d = 14	1.2 kg
DN50 / PN40	D = 165, k = 125, b = 20, n = 4, d = 18	2.6 kg
DN80 / PN16	D = 200, k = 160, b = 20, n = 8, d = 18	4.1 kg
Ordering type		Ordering code
Transmitter flange DN25 / PN40		ZSF2540
Transmitter flange DN50 / PN40		ZSF5040
Transmitter flange DN80 / PN16		ZSF8016

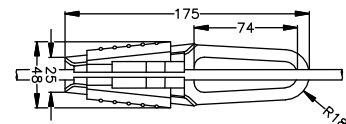


Mounting flange with cable gland		
Technical data		
Suitable for	all probes	
Flange material	stainless steel 1.4404 (316L)	
Material of cable gland	standard: brass, nickel plated on request: stainless steel 1.4305; plastic	
Seal insert	material: TPE (ingress protection IP 68)	
Hole pattern	according to DIN 2507	
Version	Size (in mm)	Weight
DN25 / PN40	D = 115, k = 85, b = 18, n = 4, d = 14	1.4 kg
DN50 / PN40	D = 165, k = 125, b = 20, n = 4, d = 18	3.2 kg
DN80 / PN16	D = 200, k = 160, b = 20, n = 8, d = 18	4.8 kg
Ordering type		Ordering code
DN25 / PN40 with cable gland brass, nickel plated		ZMF2540
DN50 / PN40 with cable gland brass, nickel plated		ZMF5040
DN80 / PN16 with cable gland brass, nickel plated		ZMF8016

cable gland M16x1.5 with seal insert (for cable-Ø 4 ... 11 mm)



Terminal clamp		
Technical Data		
Suitable for	all probes with cable Ø 5.5 ... 10.5 mm	
Material	standard: steel, zinc plated optionally: stainless steel 1.4301	
Weight	approx. 160 g	
Ordering type		Ordering code
Terminal clamp, steel, zinc plated		Z100528
Terminal clamp, stainless steel 1.4301		Z100527



This data sheet contains product specification, properties are not guaranteed. Subject to change without notice.

